

DORCE

PREFABRICATED BUILDING AND CONSTRUCTION INDUSTRY TRADE INC.

www.dorce.com



OUR SUSTAINABILITY POLICY



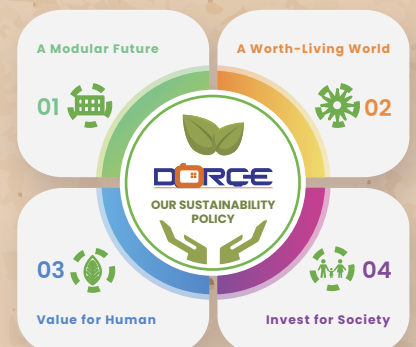
We carry on our activities for a greener world based on fair social and economic development in which environmental values and natural resources are protected for the benefit of present and future generations.

We provide rapid modern modular steel solutions under severe climatic conditions (desert, poles, etc.) in different geographies with our in-house engineering staff taking into account of the importance of environmental protection.


The United Nations Global Compact, Sustainable Development Goals (SDGs), the European Union's Green Deal, the impact of the circular economy, and technological developments through digitalization have collectively driven the construction industry toward the evolution of prefabricated modular steel structures in developed countries.

Within this framework, DORÇE adopts and implements the following measures to contribute to sustainable development:

- Reducing the environmental footprint,
- Implementing zero-waste policy,
- Adopting a recyclable product lifecycle,
- Giving importance for employee-centered organizational structure,
- Establishing Long-term sustainable stakeholder relations by taking into account their expectations,
- Responsible to the social difficulties,
- Creating projects to support social development in all geographies where we operate,
- Creates value by developing smart modular construction projects in line with R&D, innovation studies, digitalization and developing technology,
- All our activities are operated with the principle of energy and resource efficiency ,
- Protection of biodiversity and natural resources is our priority,
- We embrace sustainable supply chain management,
- Adopts and implements Business ethics and code of conduct in its entire business ecosystem.



A Modular Future



- 7 AFFORDABLE AND CLEAN ENERGY
- 8 DECENT WORK AND ECONOMIC GROWTH
- 9 INDUSTRY INNOVATION AND INFRASTRUCTURE
- 11 SUSTAINABLE CITIES AND COMMUNITIES
- 12 RESPONSIBLE CONSUMPTION AND PRODUCTION

A Worth-Living World



- 7 AFFORDABLE AND CLEAN ENERGY
- 12 RESPONSIBLE CONSUMPTION AND PRODUCTION
- 13 CLIMATE ACTION
- 15 LIFE ON LAND

Value for Human

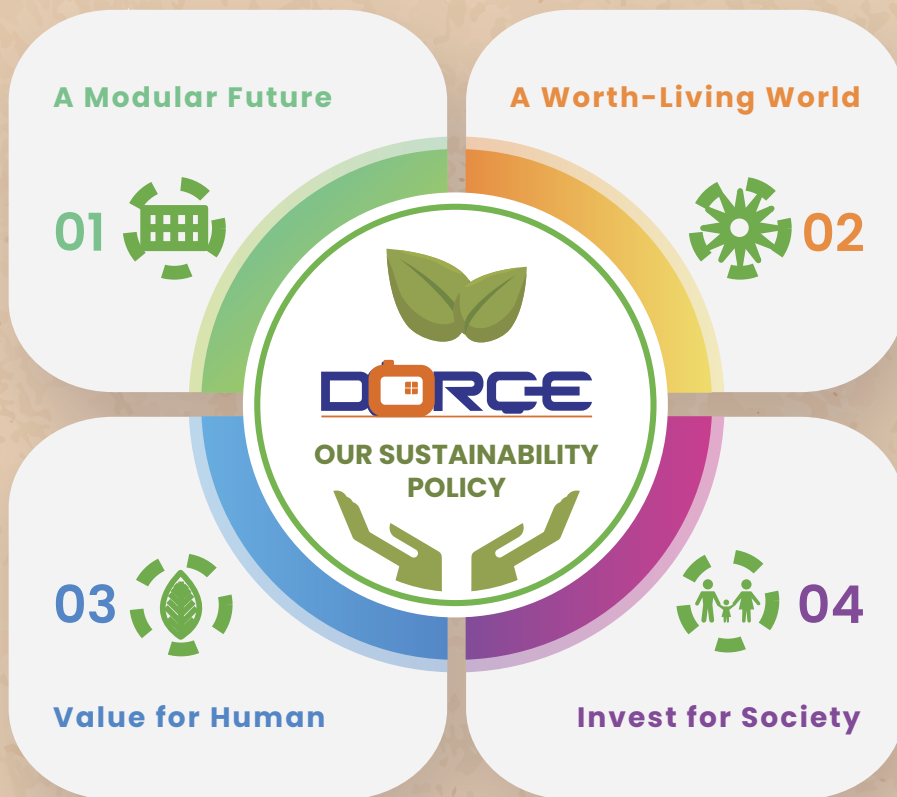


- 3 GOOD HEALTH AND WELL-BEING
- 4 QUALITY EDUCATION
- 5 GENDER EQUALITY
- 8 DECENT WORK AND ECONOMIC GROWTH
- 10 REDUCED INEQUALITIES

Invest for Society



- 3 GOOD HEALTH AND WELL-BEING
- 5 GENDER EQUALITY
- 8 DECENT WORK AND ECONOMIC GROWTH
- 10 REDUCED INEQUALITIES





MIDDLE EAST Iraq Qatar Oman Jordan Saudi Arabia United Arab Emirates Yemen Iran Kuwait
ASIA Afghanistan Azerbaijan Georgia Kazakhstan Kyrgyzstan Malaysia Mongolia Nepal
 Pakistan Russian Federation Tajikistan Turkmenistan Uzbekistan **EUROPE** Albania Bosnia
 Herzegovina Bulgaria United Kingdom Kosovo Ireland Macedonia Moldova Romania Ukraine
AFRICA Algeria Cameroon Central African Republic Democratic Republic of Congo Djibouti
 Equatorial Guinea (Malabo Island) Gabon Guinea Libya Nigeria Niger Mauritania Morocco
 Mozambique Republic of Congo Sudan Mali **AUSTRALIA** Australia **SOUTH AMERICA** Venezuela



DORCE in Extreme Environments!

In Freezing cold, in scorching heat, in winds and storms, where few dare to tread - DORCE reigns.

DORCE

Dorce Manufacturing Facilities
Dorçe Üretim Tesisleri



DORCE owns one of the largest PREFABRICATED steel building manufacturing facilities in the World.

About Us Hakkımızda

Dorce Prefabricated Building & Construction Industry Trade Inc., founded in 1982, is a Turkish General Contractor with a vast worldwide experience, which provides Engineering, Procurement and Construction (EPC) services for projects requiring high quality services in extreme environments.

Dorce Inc. undertakes the General Contracting Projects for Construction and EPC Services to the clients in Oil & Gas, Energy, Mining, Construction, Military, Health, Education, Aid & Relief (International and non-profit Organizations), Governmental Authorities (Ministries, Governorates, Embassies etc.) etc. all around the World.

In addition, Dorce owns one of the largest prefabricated steel building manufacturing facilities in the world. The manufacturing facility located in Ankara - Türkiye.

Dorce stands out with its ability to quickly mobilize & operate in the harshest conditions in several countries at the same time.

Dorçe A.Ş. has been included in the ENR 2023 Top 250 International Contractor Companies List, which was published on August 22, 2023, and evaluated based on the total contract revenue of contractors' projects worldwide, regardless of the country.

Dorçe A.Ş. has maintained its position on this list under the category of 'General Building Supply' with its Engineering, Procurement, Construction (EPC) projects and the production of modular prefabricated buildings.

Dorçe A.Ş. has taken its place in the Turkish Exporters Assembly (TIM) list of Turkey's Top 1000 Exporters ranking.

Dorçe Prefabrik Yapı ve İnşaat Sanayi Ticaret A.Ş., 1982'de kurulan, Dünya çapındaki tecrübesi ile en zor iklim koşulları altında, yüksek kalite ile Mühendislik, Tedarik ve İnşaat servisleri veren Türk Ana Müteahhit firmasıdır.

Dorçe A.Ş. Dünya çapında, Petrol & Gaz, Enerji, Maden, İnşaat, Askeriye, Sağlık, Eğitim, Yardım Kuruluşları (Uluslararası örgüt ve kar amacı gütmeyen yardım kurumları), hükümet makamlarına (bakanlıklar, valilikleri, elçilikler, vb.), vb. müşterilerine Genel Müteahhitlik ve EPC projeler tamamlamıştır.

Dorçe, Dünya'da ki en büyük prefabrik çelik yapı üretim tesislerinden birine sahiptir. Üretim tesisi Türkiye - Ankara'da yer almaktadır.

Dorçe A.Ş. aynı anda farklı ülkelerde, ağır şartlar altında, hızlıca mobilize olup faaliyet gösterme gücü ile ön plana çıkmaktadır.

Dorçe A.Ş., 22 Ağustos 2023 tarihinde yayınlanmış olan, Müteahhit firmaların ülke fark etmeksizin Dünya çapındaki projelerine ait sözleşme gelir toplamı baz alınarak değerlendirilen ENR 2023 En Büyük 250 Uluslararası Müteahhit Firma Listesi'nde yer aldı. Dorçe A.Ş. Mühendislik, Tedarik ve Satınalma (EPC) projeleri ve modüler prefabrik bina üretimi ile bu listede 'Genel Bina Temini' başlığı altında yerini korumuştur.

Dorçe A.Ş., Türkiye İhracatçılar Meclisi (TİM) Türkiye'nin ilk 1000 İhracatçı sıralamasında yerini almıştır.

DÖRGE

CMM Constructing
Modern Methods

DfMA design for
manufacturing
and assembly

DIMC designing for
industrialized methods
of construction

MMC modern methods of
CONSTRUCTION



Global Alliance
for Buildings and
Construction

Significant Awards Başlıca Ödüllerimiz



Productions & Services

Üretim ve Servislerimiz

PRODUCTIONS

Turnkey Camp Projects:

- Worker Residential Cities,
- Worker / Labour Camps,
- Military Camps,
- Refugee Camps / Cities,
- Immigration Camps / Cities,
- Emergency Accommodation Camps,
- Life Support Camps,
- Logistic Base Camps,
- Including: Offices, Dormitories, Dining Halls and Kitchens, WC-Shower Units, Laundries

Turnkey Industrial Facilities:

- Industry Buildings
- Factory Buildings,
- Aircraft Hangars,
- Gymnasias,
- Workshops,
- Warehouses,
- Cold Rooms,
- Garages

Turnkey Social Facilities:

- Housing & Residence Units,
- Hotels & Holiday Villages,
- Schools & Nurseries,
- Student Dormitory Buildings,
- Hospitals & Clinics,
- Office & Management Buildings,
- Police Stations & Schools
- Prisons,
- GSM Shelters

SERVICES

- Architectural and Engineering Design
- Procurement
- Building Manufacturing, Supply and Delivery
- Planning and Site Survey
- Civil Works
 - Site Preparation & earth works
 - Foundation & Concrete Works
 - Site roads & Car Parking Areas
 - Landscaping
 - Playgrounds
 - Security Fencing
- Infrastructure Works and Utilities
 - Site Electrical & Mechanical Installation Works
 - Power Receiving/Transforming System,
 - Fire Detection, Alarm, Fighting & Controlling Systems
 - Power Plant and Generators
 - Potable & Sewage Water Treatment System
- HVAC Systems
- Furnishing
- Packing, Loading, Delivery & Logistics
- Assembling, Dismantling and Redeployment
- Operation and Maintenance
- After Sales Services

PROJELER

Anahtar Teslim Kamp Binaları

- İşçi Yaşam Kentleri,
- İşçi Kampları,
- Askeri Kamplar,
- Mülteci Kampları / Kentleri
- Göçmen Kampları,
- Acil Yerleşim Kampları,
- Yaşam Destek Kampları
- Lojistik Destek US Kampları, (Ofisler, Yatakhaneler, Yemekhane ve Mutfaklar, WC-Duş Üniteleri, Çamaşırhaneler)

Anahtar Teslim Endüstriyel Tesisler

- Sanayi Yapıları,
- Fabrika Binaları,
- Uçak hangarları,
- Jimnastik Salonları,
- Atölyeler,
- Depolar,
- Soğuk Odalar
- Garajlar,

Anahtar Teslim Sosyal Tesisler

- Konut ve Rezidanslar,
- Oteller ve Tatil Köyleri,
- Okullar ve Kresler,
- Öğrenci Yurtları,
- Hastaneler ve Klinikler,
- Ofis ve Yönetim Binaları,
- Polis İstasyonları ve Okulları
- Cezaevleri,
- Spor Salonları,
- GSM Kabinleri

SERVİSLER

- Mimarlık ve Mühendislik Tasarımı
- Satınalma
- Bina Üretim, Tedarik ve Nakliyesi
- Planlama ve Saha Araştırması
- İnşaat İşleri
 - Saha Hazırlanması ve Toprak İşleri,
 - Zemin ve Temel İşleri,
 - Saha Bağlantı Yolları ve Araç Park Alanları,
 - Saha Elektrik ve Mekanik Tesisat İşleri,
 - Peyzaj,
 - Güvenlik Çitleri
- Altyapı İşleri ve Tesisleri
 - Saha elektrik ve Mekanik Tesisatı
 - Enerji Girişi/Dönüştürmesi Sistemi
 - Yangın Algılama, Alarm, Mücadele ve Kontrol Sistemleri,
 - Elektrik Santrali ve Jeneratörler,
 - Temiz ve Pis Su Arıtma Sistemleri,
- HVAC Sistemleri
- Mobilya
- Paketleme, Yükleme, Nakliye ve Lojistik
- Montaj, Demontaj ve tekrar konuşlanma
- İşletme ve Bakım
- Satış Sonrası Hizmet



LTI Awards Kazasızlık Ödülleri



Certificates

Sertifikalar

- Overseas Contracting Certificate
- Domestic Contracting Certificate
- ISO 14064-1 Greenhouse Gas Verification Statement
- ISO 9001 Quality Management System Certificate
- ISO 14000 Environmental Management System Certificate
- ISO 45001 Occupational Health & Safety Management System Certificate
- ISO/IEC 27001 Information Security Management System Certificate
- TSE Covid-19 Safe Production Certificate (HQ and Production Plant)
- TSE-HYB Service Adequacy Certificate (Türkiye)
- EN 1090-2 EXC.2 Factory Production Control Certificate (CE Certificate)
- EN ISO 3834-2 Certificate of Welding Quality System
- GOST-R Certificate of Product Conformity (Russian Federation)
- GOST-R ISO 9001 Quality Management System Certificate (Russian Federation)
- GOST-K Certificate of Product Conformity (Kazakhstan)
- ST RK ISO 9001 Quality Management System Certificate (Kazakhstan)
- TS EN 16034 Certificate of Conformity for Fire Rated Wooden Doors
- QCDD Certificates (Wall, Floor, Column, Door, Ceiling Assemblies)

- Yurt Dışı Müteahhitlik Belgesi
- Yurt içi Müteahhitlik Belgesi
- TSE ISO 14064-1 Karbon Ayak İzi Beyan Belgesi
- TSE-ISO-EN 9001 Kalite Yönetim Sistemi Sertifikası
- TSE-ISO-EN 14000 Çevre Yönetim Sistemi Sertifikası
- TSE-TS-ISO 45001 İş Sağlığı ve Güvenliği Yönetim Sistemi Sertifikası
- TSE-EN-ISO/IEC 27001 Bilgi Güvelliği Yönetim Sistemi Sertifikası
- TSE Covid-19 Güvenli Üretim Belgesi (Üretim Tesisleri & Merkez Ofis)
- TSE-HYB Hizmet Yeterlilik Belgesi (Türkiye)
- EN 1090-2 EXC.2 Fabrika Üretim Kontrol Sertifikası (CE Sertifikası)
- EN ISO 3834-2 Kaynaklı imalat Kalite Sistem Sertifikası
- Rusya Federasyonu Ürün Uygunluk Sertifikası
- GOST-R ISO 9001 Kalite Yönetim Sistemi Sertifikası (Rusya Federasyonu)
- Kazakistan Ürün Uygunluk Sertifikası
- ST RK ISO 9001 Kalite Yönetim Sistemi Sertifikası
- TS EN 16034 Yangına Dayanımlı Ahşap Kapılar Uygunluk Sertifikası
- QCDD Katar Sivil Savunma Departmanı Sertifikasyonları (duvar, şase, kolon, kapı, tavan) Katar

Contract Type
Construction

Sözleşme Tipi
İnşaat



**446 BED CAPACITY BASRAH UNIVERSITY HOSPITAL
(16 Storey) / BASRAH - IRAQ**

**446 YATAKLI BASRA ÜNİVERSİTE HASTANESİ
(16 Katlı) / BASRA - IRAK**







446 BED CAPACITY BASRAH UNIVERSITY HOSPITAL (16 Storey) / BASRAH - IRAQ
446 YATAKLI BASRA ÜNİVERSİTE HASTANESİ (16 Katlı) / BASRA - IRAK

Contract Type
Design & Construction

Sözleşme Tipi
Tasarım & İnşaat



**160 BED CAPACITY GENERAL HOSPITAL PROJECT
(4 UNITS) / APURE, BARINAS, MERIDA, GUARICA - VENEZUELA**

160 YATAK KAPASİTELİ GENEL HASTANE PROJESİ
(4 ADET) / APURE, BARINAS, MERIDA, GUARICA - VENEZÜELA



Contract Type
Procurement & Construction

Sözleşme Tipi
Tedarik ve İnşaat



1.416 VILLA HOUSING COMPLEX AND SOCIAL FACILITIES / BASRAH - IRAQ

1.416 ADET VİLLA TOPLU KONUT KOMPLEKSİ VE
SOSYAL TESİSLERİ / BASRA - IRAK







1.416 VILLA HOUSING COMPLEX AND SOCIAL FACILITIES / BASRAH - IRAQ
1.416 ADET VİLLA TOPLU KONUT KOMPLEKSİ VE SOSYAL TESİSLERİ / BASRA - IRAK

Contract Type
Design & Construction

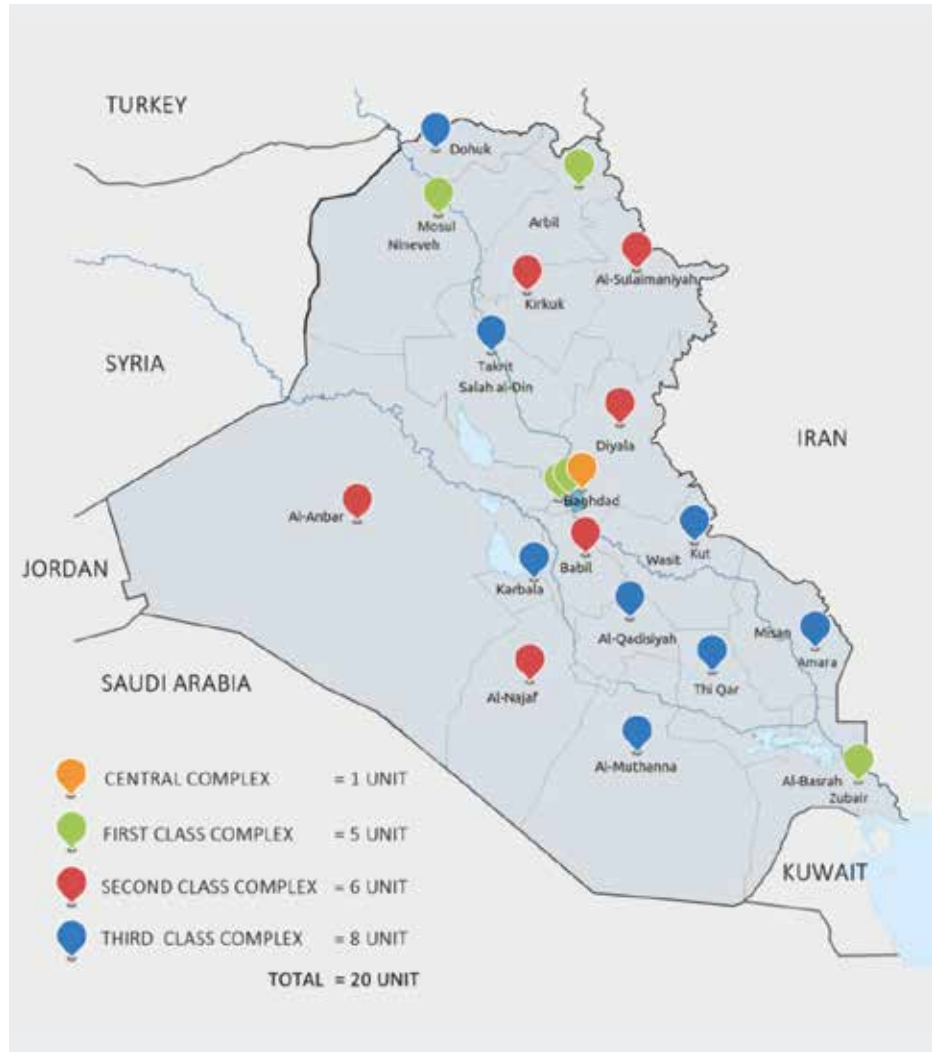
Sözleşme Tipi
Tasarım & İnşaat



VEHICLE INSPECTION STATIONS / 20 STATIONS IN 17 CITIES - IRAQ
ARAÇ MUAYENE İSTASYONLARI / 17 ŞEHİRDE 20 İSTASYON - IRAK







VEHICLE INSPECTION STATIONS / 20 STATIONS IN 17 CITIES - IRAQ
ARAÇ MUAYENE İSTASYONLARI / 17 ŞEHİRDE 20 İSTASYON - IRAK

Contract Type
EPC

Sözleşme Tipi
EPC



VEHICLE INSPECTION STATIONS / 34 STATIONS IN 30 CITIES - TÜRKİYE
ARAÇ MUAYENE İSTASYONLARI / 30 ŞEHİRDE 34 İSTASYON - TÜRKİYE



Contract Type
Design & Construction

Sözleşme Tipi
Tasarım & İnşaat



SHAGYRLY SHOMYSHTY GAS DRILLING AND PROCESSING FACILITY / BEYNAU - KAZAKHSTAN

SHAGYRLY SHOMYSHTY DOĞALGAZ SONDAJ VE
İŞLEME TESİSİ / BEYNAU - KAZAKİSTAN







SHAGYRLY SHOMYSHTY GAS DRILLING AND PROCESSING FACILITY / BEYNAU - KAZAKHSTAN
SHAGYRLY SHOMYSHTY DOĞALGAZ SONDAJ VE İŞLEME TESİSİ / BEYNAU - KAZAKİSTAN

Contract Type
EPC

Sözleşme Tipi
EPC



26.000 PERSON RESIDENTIAL CITY / AL MAFRAQ, ABU DHABI - UAE

26.000 KİŞİLİK YERLEŞİM ŞEHİRİ / AL MAFRAK, ABU DABI - BAE







26.000 PERSON RESIDENTIAL CITY / AL MAFRAQ, ABU DHABI - UAE
26.000 KİŞİLİK YERLEŞİM ŞEHİRİ / AL MAFRAK, ABU DABİ - BAE

Contract Type
EPC

Sözleşme Tipi
EPC



16.000 PERSON RESIDENTIAL CITY / AL MAFRAQ, ABU DHABI - UAE

16.000 KİŞİLİK YERLEŞİM ŞEHİRİ / AL MAFRAK, ABU DABI - BAE







16.000 PERSON RESIDENTIAL CITY / AL MAFRAQ, ABU DHABI - UAE
16.000 KİŞİLİK YERLEŞİM ŞEHİRİ / AL MAFRAK, ABU DABİ - BAE

Contract Type
Design & Build

Sözleşme Tipi
Tasarım & İnşaat



12.000 PERSON RESIDENTIAL CITY / SAUDI ARABIA

12.000 KİŞİLİK SUUDİ ARABİSTAN İŞÇİ YERLEŞİM ŞEHİRİ / SUUDİ ARABİSTAN







12.000 PERSON RESIDENTIAL CITY / SAUDI ARABIA
12.000 KİŞİLİK SUUDİ ARABİSTAN İŞÇİ YERLEŞİM ŞEHİRİ / SUUDİ ARABİSTAN

Contract Type
EPC

Sözleşme Tipi
EPC



MMUP PROJECT - INTEGRATED WORKERS ACCOMMODATION CAMP FOR 4.000 PERSON / DOHA - QATAR

MMUP PROJESİ İÇİN ENTEGRE İŞÇİ KONAKLAMA KAMPI
(4.000 KİŞİLİK) / DOHA - KATAR



Contract Type
EPC

Sözleşme Tipi
EPC



AKTOGAY COPPER MINING EXPANSION PROJECT WORKER ACCOMMODATION CAMP FOR 2.700 PERSON / AKTOGAY - KAZAKHSTAN

AKTOGAY BAKIR MADENİ GENİŞLETME PROJESİ - 2.700 KİŞİLİK İŞÇİ KONAKLAMA KAMP İNŞAATI / AKTOGAY - KAZAKİSTAN



Contract Type
EPC

Sözleşme Tipi
EPC



**RAPID PROJECT - TEMPORARY CAMP CONSTRUCTION FOR
2.400 PERSON / JOHOR - MALAYSIA**

RAPID PROJESİ - 2.400 KİŞİLİK KAMP İNŞAATI / JOHOR - MALEZYA







RAPID PROJECT - TEMPORARY CAMP CONSTRUCTION FOR 2.400 PERSON / JOHOR - MALAYSIA
RAPID PROJESİ - 2.400 KİŞİLİK KAMP İNŞAATI / JOHOR - MALEZYA

Contract Type
Construction

Sözleşme Tipi
İnşaat



CONSTRUCTION AND RENOVATION OF THE LIBYAN EMBASSY BUILDING / ANKARA - TÜRKİYE

LİBYA ELÇİLİK BİNASI İNŞAAT VE
YENİLEME PROJESİ / ANKARA - TÜRKİYE



Contract Type
Design & Contract

Sözleşme Tipi
Tasarım & İnşaat



CITY HOTEL DUQM WITH 120 BED CAPACITY / AL DUQM - OMAN
DUQM ŞEHİR OTELİ (120 ODA KAPASİTELİ) / AL DUQM - UMMAN







CITY HOTEL DUQM WITH 120 BED CAPACITY / AL DUQM - OMAN
DUQM ŞEHİR OTELİ (120 ODA KAPASİTELİ) / AL DUQM - UMMAN

Contract Type
EPC

Sözleşme Tipi
EPC



**TOKİ / AFAD (HOUSING DEVELOPMENT ADMINISTRATION of TÜRKİYE)
VILLAGE HOUSE and BARN PROJECT / TÜRKİYE / MALATYA, ADIYAMAN,
VAN & TUNCELI (at 63 different construction sites)**

TOKİ / AFAD - KÖY EVİ VE AHIR PROJESİ /
TÜRKİYE / MALATYA, ADIYAMAN, VAN & TUNCELİ (63 farklı sahalarda)







TOKİ / AFAD (HOUSING DEVELOPMENT ADMINISTRATION of TÜRKİYE) VILLAGE HOUSE and BARN PROJECT / TÜRKİYE / MALATYA, ADIYAMAN, VAN & TUNCELİ (at 63 different construction sites)
TOKİ / AFAD - KÖY EVİ VE AHIR PROJESİ / TÜRKİYE / MALATYA, ADIYAMAN, VAN & TUNCELİ (63 farklı sahalarda)

Contract Type
EPC

Sözleşme Tipi
EPC



**TASIAST GOLD MINE EXPANSION PROJECT -
8.400 PERSON TEAM VILLAGE / TASIAST - MAURITANIA**

TASIAST ALTIN MADENİ GENİŞLETME PROJESİ -
8.400 KİŞİLİK YAŞAM KASABASI / TASIAST - MORİTANYA







TASIAST GOLD MINE EXPANSION PROJECT - 8.400 PERSON TEAM VILLAGE / TASIAST - MAURITANIA
TASIAST ALTIN MADENİ GENİŞLETME PROJESİ - 8.400 KİŞİLİK YAŞAM KASABASI / TASIAST - MORİTANYA

Contract Type
Design & Construction

Sözleşme Tipi
Tasarım & İnşaat



SAKHALIN ONSHORE OIL PROCESSING FACILITY - 7.000 PERSON CAMP CONSTRUCTION / SAKHALIN ISLAND - RUSSIAN FEDERATION

SAHALIN SAHİL PETROL İŞLEME TESİSLERİ -
7.000 KİŞİLİK KAMP İNŞAAT / SAHALİN ADASI - RUSYA FEDERASYONU



Contract Type
Design & Supply

Sözleşme Tipi
Tasarım ve Tedarik



AMUR GAS PROCESSING PLANT - 17.250 PERSON ACCOMMODATION CAMP CONSTRUCTION / AMUR REGION - RUSSIAN FEDERATION

AMUR GAZ İŞLEME TESİSLERİ - 17.250 KİŞİLİK İŞÇİ KAMPİ İNŞAATI /
AMUR BÖLGESİ - RUSYA FEDERASYONU



Contract Type
EPC

Sözleşme Tipi
EPC



**FUTURE GROWTH PROJECT / WELLHEAD PRESSURE
MANAGEMENT PROJECT (FGP/WPMP) PROJECT MANAGEMENT TEAM
OFFICE BUILDING FOR 645 PERSON & CANTEEN BUILDING FOR
960 PERSON / TENGİZ – KAZAKHSTAN**

**İLERİYE DÖNÜK GELİŞTİRME PROJESİ / KUYUBAŞI BASINCI YÖNETİM
PROJESİ (FGP/WPMP) 645 KİŞİLİK TCO PROJE YÖNETİM EKİBİ OFİSİ VE
960 KİŞİLİK ANA YEMEKHANE BİNASI / TENGİZ - KAZAKİSTAN**







FUTURE GROWTH PROJECT / WELLHEAD PRESSURE MANAGEMENT PROJECT (FGP/WPMP) PROJECT MANAGEMENT TEAM OFFICE BUILDING FOR 645 PERSON & CANTEN BUILDING FOR 960 PERSON / TENGİZ - KAZAKHSTAN
İLERİYE DÖNÜK GELİŞTİRME PROJESİ / KUYUBAŞI BASINCI YÖNETİM PROJESİ (FGP/WPMP) 645 KİŞİLİK TCO PROJE YÖNETİM EKİBİ OFİSİ VE 960 KİŞİLİK ANA YEMEKHANE BİNASI / TENGİZ - KAZAKİSTAN

Contract Type
EPC

Sözleşme Tipi
EPC



**SHANYRAK "BIRLIK" VILLAGE CONSTRUCTION FOR
4.000 PERSON / TENGİZ - KAZAKHSTAN**

4.000 KİŞİLİK SHANYRAK "BİRLİK" KAMP İNŞAATI / TENGİZ - KAZAKİSTAN







SHANYRAK "BIRLIK" VILLAGE CONSTRUCTION FOR 4.000 PERSON / TENGİZ -KAZAKHSTAN
4.000 KİŞİLİK SHANYRAK "BİRLİK" KAMP İNŞAATI / TENGİZ - KAZAKİSTAN

Contract Type
EPC

Sözleşme Tipi
EPC



KASHAGAN OIL FIELD DEVELOPMENT - TURNKEY CAMP PROJECT FOR 6.500 PERSON / ATYRAU - KAZAKHSTAN

KAŞAGAN PETROL SAHASI - 6.500 KİŞİLİK ANAHTAR TESLİM
KAMP PROJESİ / ATRAU - KAZAKİSTAN



Contract Type
EPC

Sözleşme Tipi
EPC



**TANAP PROJECT (TRANS ANATOLIAN NATURAL GAS
PIPELINE) MAIN CAMP & STORAGE YARDS FOR
1.700 PERSON / ANKARA & YOZGAT - TÜRKİYE**

TANAP PROJESİ (TRANS ANADOLU DOĞAL GAZ BORU HATTI)
1.700 KİŞİLİK ANA KAMP VE DEPOLAMA ALANLARI /
ANKARA & YOZGAT - TÜRKİYE







TANAP PROJECT (TRANS ANATOLIAN NATURAL GAS PIPELINE)
MAIN CAMP & STORAGE YARDS FOR 1.700 PERSON / ANKARA & YOZGAT - TÜRKİYE
TANAP PROJESİ (TRANS ANADOLU DOĞAL GAZ BORU HATTI)
1.700 KİŞİLİK ANA KAMP VE DEPOLAMA ALANLARI / ANKARA & YOZGAT - TÜRKİYE

Contract Type
EPC

Sözleşme Tipi
EPC



**MINISTRY OF EDUCATION SCHOOL PROJECT FOR
37.000 STUDENT / 154 SCHOOLS, IN 81 CITIES - TÜRKİYE**

**MİLLİ EĞİTİM BAKANLIĞI 37.000 ÖĞRENCİ KAPASİTELİ
OKUL PROJESİ / 81 ŞEHİRDE, 154 OKUL - TÜRKİYE**



Contract Type
EPC

Sözleşme Tipi
EPC



**SPECIAL EDUCATION KINDERGARTEN PROJECT FOR
PROMOTING INTEGRATION OF SYRIAN KIDS INTO THE
TURKISH EDUCATION SYSTEM / PIKTES - T.C. MINISTRY OF EDUCATION /
50 SCHOOLS, IN 19 CITIES - TÜRKİYE**

**SURİYELİ ÇOCUKLARIN TÜRK EĞİTİM SİSTEMİNE ENTEGRASYONUNUN
DESTEKLENMESİ PROJESİ KAPSAMINDA ÖZEL EĞİTİM ANAOKULU YAPIMI
PROJESİ / 50 OKUL 19 ŞEHİRDE - TÜRKİYE**



Contract Type
Design & Construct

Sözleşme Tipi
Tasarım & İnşaat



AUTISTIC CHILDREN PRIVATE SCHOOL / ANKARA - TÜRKİYE
OTİSTİK ÇOCUKLAR ÖZEL OKULU / ANKARA - TÜRKİYE



Contract Type
EPC

Sözleşme Tipi
EPC



UNICEF SCHOOL WITH 12 CLASSROOM / KİLİS - TÜRKİYE

UNICEF 12-SINIFLI OKUL BİNASI / KİLİS - TÜRKİYE



Contract Type
EPC

Sözleşme Tipi
EPC



EARLY WORKS AND FACILITIES CONSTRUCTION FOR SOUTH CAUCASUS PIPELINE EXPANSION PROJECT (SCPX) TEMPORARY CONSTRUCTION FACILITIES FOR COMPANY & CONTRACTOR (3 DIFFERENT SITES - 1.374 PERSON) / AZERBAIJAN & GEORGIA

GÜNEY KAFKASYA BORU HATTI GENİŞLETİLMESİ - ÖN İŞLERİ İLE TESİSLERİN İNŞAATI (SCPX) İŞ VEREN VE YÜKLENİCİ GEÇİCİ İNŞAAT TESİSLERİ (1.374 KİŞİLİK - 3 AYRI SAHA) / AZERBAIJAN & GÜRCİSTAN





Azerbaijan Borsunlu





Georgia Poladaantkari



EARLY WORKS AND FACILITIES CONSTRUCTION FOR SOUTH CAUCASUS PIPELINE EXPANSION PROJECT (SCPX) TEMPORARY CONSTRUCTION FACILITIES FOR COMPANY & CONTRACTOR (3 DIFFERENT SITES - 1.374 PERSON) / AZERBAIJAN & GEORGIA
GÜNEY KAFKASYA BORU HATTI GENİŞLETİLMESİ - ÖN İŞLERİ İLE TESİSLERİN İNŞAATI (SCPX) İŞ VEREN VE YÜKLENİCİ GEÇİCİ İNŞAAT TESİSLERİ (1.374 KİŞİLİK - 3 AYRI SAHA) / AZERBAIJAN & GÜRCİSTAN

Contract Type
Supply & Assembly

Sözleşme Tipi
Tedarik & Montaj



**SOUTH CAUCASUS PIPELINE EXPANSION PROJECT (SCPX) CSG1,
CSG2 & AREA 81 CAMP CONSTRUCTION FOR 1.750 PERSON /
GARDABANI, TSALKA, AKHALTSIKHE – GEORGIA**

**GÜNEY KAFKASYA BORU HATTI GENİŞLETİLME PROJESİ (SCPX)
CSG1, CSG2 & AREA 81 1.750 KİŞİLİK KAMP İNŞAATI / GARDABANI,
TSALKA, AKHALTSIKHE - GÜRCİSTAN**



Contract Type
EPC

Sözleşme Tipi
EPC



MINISTRY OF INTERIOR STRATEGIC BUILDINGS / ABU DHABI - UAE
İÇİŞLERİ BAKANLIĞI STRATEJİK BİNALARI / ABU DABİ - BAE







MINISTRY OF INTERIOR STRATEGIC BUILDINGS / ABU DHABI - UAE
İÇİŞLERİ BAKANLIĞI STRATEJİK BİNALARI / ABU DABİ - BAE

Contract Type
EPC

Sözleşme Tipi
EPC



**QATALUM CONSTRUCTION VILLAGE FOR
10.000 PERSON / MESAIEED INDUSTRIAL CITY - DOHA - QATAR**

**10.000 KİŞİLİK KATALUM İNŞAAT KASABASI /
MESAİEED SANAYİ ŞEHİRİ - DOHA - KATAR**







QATALUM CONSTRUCTION VILLAGE FOR 10.000 PERSON / MESAIEED INDUSTRIAL CITY - DOHA - QATAR
10.000 KİŞİLİK KATALUM İNŞAAT KASABASI / MESAİEED SANAYİ ŞEHİRİ - DOHA - KATAR

Contract Type
EPC

Sözleşme Tipi
EPC



**350 PERSON LIFE SUPPORT CAMP /
ZUBAIR OIL FIELD - BASRAH - IRAQ**

**350 KİŞİLİK YAŞAM DESTEK KAMPI /
ZÜBEYİR PETROL SAHASI - BASRA - IRAK**







350 PERSON LIFE SUPPORT CAMP / ZUBAIR OIL FIELD - BASRAH - IRAQ
350 KİŞİLİK YAŞAM DESTEK KAMPİ / ZÜBEYİR PETROL SAHASI - BASRA - IRAK

Contract Type
Construction

Sözleşme Tipi
İnşaat



**LIBYA GREAT MAN MADE RIVER PROJECT (MOBILE CAMP,
IM-MOBILE CAMP & OWNER CAMP) / LIBYA - KUFRA**

**LİBYA BÜYÜK İNSAN YAPIMI NEHİR PROJESİ (MOBİLİZASYON KAMPI,
TAŞINMAZ KAMP VE İŞVEREN KAMPI) / LİBYA - KUFRA**



Contract Type
EPC

Sözleşme Tipi
EPC



ANGONDJE HOUSING COMPLEX (598 UNITS) / LIBREVILLE - GABON
ANGONDJE TOPLU KONUT PROJESİ (598 ADET) / LIBREVILLE - GABON



Contract Type
EPC

Sözleşme Tipi
EPC



**REFUGEE ACCOMMODATION FACILITY FOR 100.000 PERSON
(4 DIFFERENT SITES) / HATAY YAYLADAĞI & BOYNUYOĞUN,
KAHRAMANMARAŞ, ADANA - TÜRKİYE**

100.000 KİŞİLİK MÜLTECİ YAŞAM KENTİ
(4 AYRI SAHA) / HATAY YAYLADAĞI & BOYNUYOĞUN,
KAHRAMANMARAŞ, ADANA - TÜRKİYE



Kahramanmaraş

Çanakkale Earthquake Field - 700 Man Camp
Deprem Bölgesi - 700 Kişilik Yaşam Kampı



Kahramanmaraş



Adana

Hatay



Kahramanmaraş



REFUGEE ACCOMMODATION FACILITY FOR 100.000 PERSON (4 DIFFERENT SITES) /
HATAY YAYLADAĞI & BOYNUYOĞUN, KAHRAMANMARAŞ, ADANA - TÜRKİYE
100.000 KİŞİLİK MÜLTECİ YAŞAM KENTİ (4 AYRI SAHA) /
HATAY YAYLADAĞI & BOYNUYOĞUN, KAHRAMANMARAŞ, ADANA - TÜRKİYE

Contract Type
Design & Construction

Sözleşme Tipi
Tasarım & İnşaat



25.000 EMERGENCY ACCOMMODATION MODULS FOR EARTHQUAKE FIELD / ADANA, ADIYAMAN, DİYARBAKIR, GAZİANTEP, HATAY, KAHRAMANMARAŞ, KİLİS, MALATYA, OSMANİYE, ŞANLIURFA - TÜRKİYE

25.000 ADET DEPREM BÖLGESİ ACİL YERLEŞİM MODÜLLERİ
(11 AYRI SAHA) / ADANA, ADIYAMAN, DİYARBAKIR, GAZİANTEP, HATAY,
KAHRAMANMARAŞ, KİLİS, MALATYA, OSMANİYE, ŞANLIURFA



Contract Type
Design & Construction

Sözleşme Tipi
Tasarım & İnşaat



**MARMARA EARTHQUAKE FIELD EMERGENCY ACCOMMODATION
MODULS FOR 20.000 PERSON (4 DIFFERENT SITES) /
ADAPAZARI, DÜZCE, KOCAELİ, YALOVA - TÜRKİYE**

**20.000 KİŞİLİK MARMARA DEPREM BÖLGESİ ACİL YERLEŞİM MODÜLLERİ
(4 AYRI SAHA) / ADAPAZARI, DÜZCE, KOCAELİ, YALOVA - TÜRKİYE**



Contract Type
Design & Construction

Sözleşme Tipi
Tasarım & İnşaat



EARTHQUAKE FIELD EMERGENCY ACCOMMODATION MODULS FOR 20.000 PERSON (3.150 UNITS) / VAN – TÜRKİYE

20.000 KİŞİLİK DEPREM BÖLGESİ ACİL YERLEŞİM MODÜLLERİ
(3.150 ADET) / VAN – TÜRKİYE



Contract Type
Design & Build

Sözleşme Tipi
Tasarım & İnşaat



3,000 EMERGENCY ACCOMODATION MODULS FOR EARTHQUAKE FIELD / ADIYAMAN, GAZIANTEP - TÜRKİYE

3.000 ADET ACİL YERLEŞİM MODÜLLERİ /
ADIYAMAN, GAZIANTEP - TÜRKİYE TPAO (Türkiye Petrolleri Anonim Ortaklığı)



Contract Type
Design & Construction

Sözleşme Tipi
Tasarım & İnşaat



EARTHQUAKE FIELD EMERGENCY ACCOMMODATION MODULS FOR 7.000 PERSON (1.000 UNITS) / BAM – IRAN

7.000 KİŞİLİK DEPREM BÖLGESİ ACİL YERLEŞİM MODÜLLERİ
(1.000 ADET) / BAM - İRAN



Contract Type
Design & Construction

Sözleşme Tipi
Tasarım & İnşaat



SNIM IRON ORE ENRICHMENT PLANT GUELB II PROJECT - WORKSHOP & ADMIN BUILDINGS / ZOUERATE - MAURITANIA

SNIM DEMİR CEVHERİ ZENGİNLEŞTİRME TESİSİ GUELB II
PROJESİ - ATÖLYE VE YÖNETİM BİNALARI / ZOUERATE - MORİTANYA



Contract Type
EPC

Sözleşme Tipi
EPC



**LOGISTICS WAREHOUSE FOR AFAD (TURKISH REP. DISASTER AND
EMERGENCY MANAGEMENT PRESIDENCY) / ADIYAMAN, DİYARBAKIR,
ELAZIĞ, ERZURUM, MUŞ, SİVAS / TÜRKİYE**

AFAD LOJİSTİK DEPOLARI / ADIYAMAN, DİYARBAKIR,
ELAZIĞ, ERZURUM, MUŞ, SİVAS – TÜRKİYE



Contract Type
Design & Construction

Sözleşme Tipi
Tasarım & İnşaat



AIRCRAFT HANGAR / DJIBOUTI - AFRICA

UÇAK HANGARI / CİBUTİ - AFRİKA



Contract Type
Design & Construction

Sözleşme Tipi
Tasarım & İnşaat



HOLIDAY VILLAGE / FORT-SHEVCHENKO - KAZAKHSTAN

TATIL KÖYÜ / FORT-SHEVCHENKO - KAZAKHSTAN



Contract Type
Design & Contract

Sözleşme Tipi
Tasarım & İnşaat



KPO B.V. HEAD OFFICE BUILDING / AKSAI - KAZAKHSTAN

KPO B.V. MERKEZ OFİS BİNASI / AKSAI - KAZAKİSTAN



Contract Type
EPC

Sözleşme Tipi
EPC



RUWAIS REFINERY EXPANSION PROJECT - DAEWOO WORKER CAMP AND SITE OFFICES FOR 3.400 PERSON / RUWAIS OIL FIELD, ABU DABI - UAE

RUWAIS RAFİNERİ GENİŞLETME PROJESİ - 3.400 KİŞİLİK DAEWOO İŞÇİ KAMPI VE OFİSLERİ / RUWAIS PETROL SAHASI, ABU DABI - BAE



Contract Type
EPC

Sözleşme Tipi
EPC



**JAZAN REFINERY AND TERMINAL PROJECT
8.500 PERSON CAMP CONSTRUCTION / JAZAN - SAUDI ARABIA**

**ÇİZAN RAFİNERİ VE TERMİNAL PROJESİ
8.500 KİŞİLİK KAMP İNŞAATI / JİZAN - SUUDİ ARABİSTAN**



Contract Type
EPC

Sözleşme Tipi
EPC



UMM QASR GAS TERMINAL PROJECT - TEMPORARY ACCOMMODATION FACILITY FOR 100 PERSON / BASRAH - IRAQ

UMM QASR GAZ TERMİNALİ PROJESİ
100 KİŞİLİK GEÇİCİ YAŞAM TESİSİ / BASRA - IRAK



Contract Type
EPC

Sözleşme Tipi
EPC



TIMIMOUN GAS FIELD DEVELOPMENT PROJECT - TEMPORARY ACCOMMODATION FACILITY FOR 650 PERSON / ADRAR - ALGERIA

TİMİMOUN GAZ SAHASI GELİŞTİRME PROJESİ
650 KİŞİLİK GEÇİCİ YAŞAM TESİSİ / ADRAR - CEZAYİR



Contract Type
Design & Contract

Sözleşme Tipi
Tasarım & İnşaat



ADAR OPERATION BASE CAMP / ADAR - SUDAN

ADAR OPERASYON MERKEZ KAMPI / ADAR - SUDAN



Contract Type
Design & Construction

Sözleşme Tipi
Tasarım & İnşaat



MOBILE SURGICAL HOSPITALS & MOBILE FIRST AID STATIONS / TÜRKİYE

MOBİL TIBBİ HASTANE VE MOBİL İLK YARDIM İSTASYONLARI / TÜRKİYE



Contract Type
Design & Supply

Sözleşme Tipi
Tasarım & Tedarik



VIP ACCOMMODATION MODULS PROJECT / TÜRKİYE

VIP YAŞAM MODÜLLERİ / TÜRKİYE



Contract Type
Design & Construction

Sözleşme Tipi
Tasarım & İnşaat



TP-OTC ACCOMMODATION MODULS FOR MAINTENANCE STAFF / TÜRKİYE

TP-OTC BAKIM PERSONELİ İÇİN
KONAKLAMA MODÜLLERİ / TÜRKİYE



Contract Type
Design & Contract

Sözleşme Tipi
Tasarım & İnşaat

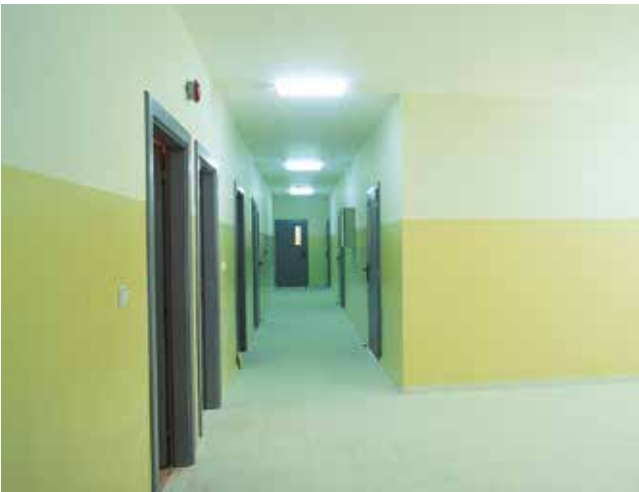


**BOTAŞ (PETROLEUM PIPELINE CORP.) REGIONAL DIRECTORATE
ADMINISTRATION BUILDING / ANKARA - TÜRKİYE**
BOTAŞ BÖLGE MÜDÜRLÜĞÜ İDARİ BİNASI / ANKARA - TÜRKİYE



Contract Type
Design & Contract

Sözleşme Tipi
Tasarım & İnşaat



ANKARA MUNICIPALITY SERVICE BUILDING / TÜRKİYE
ANKARA BELEDİYESİ HİZMET BİNASI / TÜRKİYE





HALKBANK DIYARBAKIR BRANCH / TÜRKİYE
HALKBANKASI DIYARBAKIR ŞUBE BİNASI / TÜRKİYE



Contract Type
Design & Supply

Sözleşme Tipi
Tasarım & Tedarik



ZİRAAT BANK ADIYAMAN BRANCHES / TÜRKİYE
ZİRAAT BANKASI ADIYAMAN ŞUBE BİNALARI / TÜRKİYE



Contract Type
Design & Contract

Sözleşme Tipi
Tasarım & İnşaat

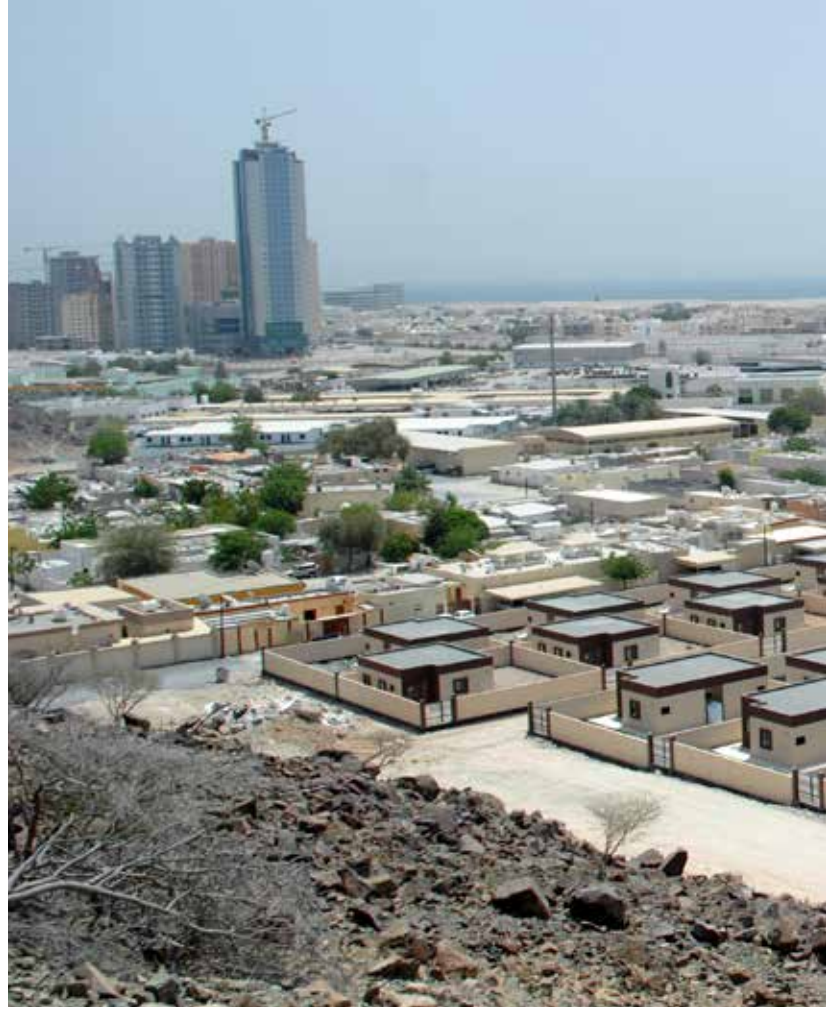


UN PRISTINA CENTRAL PRISON / PRISTINA - KOSOVO
BM PRİŞTİNA MERKEZ HAPİSHANESİ / PRİŞTİNA - KOSOVA



Contract Type
Design & Contract

Sözleşme Tipi
Tasarım & İnşaat



FUJAIRAH HOUSING PROJECT / FUJAIRAH - UAE

FUJAIRAH KONUT PROJESİ / FUJAIRAH - UAE



Contract Type
EPC

Sözleşme Tipi
EPC



MID-CLASS HOUSING UNIT / LIBYA

KONUT PROJESİ / LİBYA



Contract Type
EPC

Sözleşme Tipi
EPC



PREFABRICATED MOBILE HOUSING UNIT (TINY HOUSE)

PREFABRİK MOBİL KONUT



Contract Type
Design & Build

Sözleşme Tipi
Tasarım & Tedarik



EMERGENCY ACCOMMODATION MODULS / EUROPE

ACIL KONAKLAMA MODÜLLERİ / AVRUPA



Contract Type
Design & Construction

Sözleşme Tipi
Tasarım & İnşaat



AIRPORTABLE MILITARY MODUL BARRACKS, CLINIC, SANITARY WITH GENERATOR AND SOLAR SYSTEM

HELİKOPTER VE UÇAK İLE TAŞINABİLEN YAŞAM, REVİR, DUŞ VE
TUVALET MODÜLLERİ & JENERATÖR VE GÜNEŞ ENERJİ SİSTEMİ



Contract Type
Design & Construction

Sözleşme Tipi
Tasarım & İnşaat



TRAILER MOUNTED MILITARY MODUL BARRACKS, CLINIC, SANITARY RÖMORKA MONTE YAŞAM, REVİR, DUŞ VE TUVALET MODÜLLERİ



Contract Type
Design & Construction

Sözleşme Tipi
Tasarım & İnşaat



SELF LIFTING SHELTER / TÜRKİYE

OTOLIFT KABİN / TÜRKİYE



Contract Type
Design & Build

Sözleşme Tipi
Tasarım & Tedarik



TOURISM POLICE STATION MODULS / TÜRKİYE

TURİZM POLİSİ MODÜLLERİ / TÜRKİYE



Contract Type
Design & Build

Sözleşme Tipi
Tasarım & Tedarik



MILITARY BARRACKS / GUARD HOUSES UNITS
ASKERİ BARAKALAR VE GÜVENLİK / BEKÇİ KULÜBELERİ



Contract Type
Design & Construction

Sözleşme Tipi
Tasarım & İnşaat



MODULAR UNITS FOR LOW VOLTAGE POWER EQUIPMENT FOR THE RAS ABU ABOUD STADIUM PROJECT / QATAR

RAS ABU ABOUD STADIUM'A DÜŞÜK GERİLİM ELEKTRİK EKİPMANLARI MODÜLLERİ / KATAR





B1 Site Military Camp / Iraq



Accommodations modified from shipping containers



Australia



Turnkey Camp Project with Skids / Congo



Turnkey Camp Project with Water Tanks / Libya



Greenzone Military Camp / Iraq



Trailers



Turnkey Camp / Libya



Military Camp / Afghanistan



Simandou Worker Camp - 23 Dif. Locations / Guinea



Container House / Australia



Offshore Container Camp / Turkmenistan



Kitchen Units / Iraq



Modified Shipping Container







DORCE

PREFABRICATED BUILDING AND CONSTRUCTION INDUSTRY TRADE INC.

www.dorce.com